



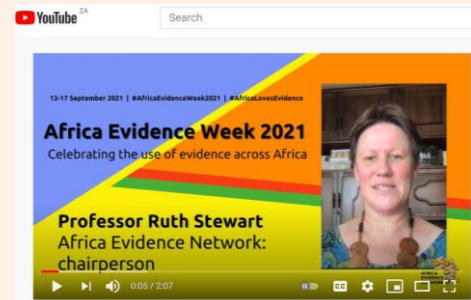
**AFRICA
EVIDENCE
NETWORK**

*Only together can evidence-
informed decision-making
become reality.*

NEWSLETTER || September 2021

A celebration of note!

In the past week we experienced, [Africa Evidence Week 2021](#) the virtual event hosted on social media biennially by the Africa Evidence Network (AEN). The aim of this year's event was to celebrate evidence-use across Africa, and the [full programme](#) of over 100 activities certainly did just that. The event drew participation and support from organisations such as [Effective Basic Services Africa](#), [PACKS Africa](#), and [AFIDEP](#). Featuring live webinars, video content, blog posts, reports, and Twitter chats. Over only five days of posting, the AEN Twitter generated over 62.4K of organic impressions, off the back of 196 tweets. The October edition of the AEN newsletter will be dedicated to sharing full details of this exciting celebration.



Thank you to all our **AFRICA EVIDENCE WEEK 2021** partners for showing the world that Africa Loves Evidence

Photo: Africa Evidence Network

.....
Following the launch of the Africa Evidence Network (AEN) [Evidence Capacities webinar series](#) at [#AfricaEvidenceWeek2021](#), expect more episodes that cover capacity development topics to take place on the 3rd Wednesday of every month, from 14h00-15h15 hours (SAST). The upcoming series episodes are scheduled for 20 October, 17 November and 19 January 2022.

Speaking at the virtual African Green Revolution Forum (AGRF) summit at State House, Nairobi, Keyan President Uhuru Kenyatta urged African leaders [to make evidence-informed policies to improve food security](#). The virtual conference focused on ways to accelerate the process of developing healthier more resilient food systems.

The monitoring and evaluation of progress on the United Nation's (UN) Sustainable Development Goals (SDGs) for Africa promises to be a more thorough and easier task, thanks to the [newly launched Africa UN Data for Development Platform](#). The platform is an online data portal bringing together statistical data from across all African countries.

Researchers from the VaxScenes project in South Africa have authored an [article](#) exploring the challenges against successful health messaging and communication, particularly relating to vaccine literacy. The article shares commentary about the vaccine mandate debate and the rapid production of vaccine science.

Putting the spotlight on... ...a new member!

Welcome to [Agape Ishabakaki](#) who works as a researcher at [EDI Global Tanzania](#). We are happy to have you Agape!

Want to spotlight you or your organisation? [Let us know](#) and you could be featured.

Mark your calendars

28 – 29 September: International Union of Forest Research Organizations (IUFRO) World Day - Digital Forest Science Forum 2021, [online](#).

20 October: Swiss Implementation Science Network Implementation Science Webinar Series, [online](#).

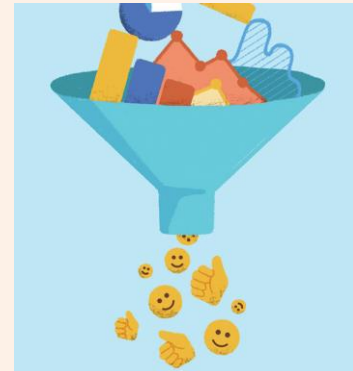
20 October: Pedagogies of capacity development for EIDM in the next Africa Evidence Network webinar in the Evidence Capacities webinar series, [online TBC](#).

We journey to Latin America to hear from Laura Boeira who introduces us to the Brazilian Coalition of Evidence. Read all about it in this month's [AEN blog post](#).

View all blog posts [online](#) and use the Network to share your AEN blog [here](#).

Measuring evidence-use by its impact and reach

Did you know that nearly a third of the World Bank's reports available as PDFs on their website had never been downloaded? This is according to a 2014 study by the World Bank, cited in an [article](#) taking a stance for the good use and/or application of evidence in influencing policy through developing the right ecosystem and levers for accountability. Authors [Heidi McAnnally-Linz](#), [Bethany Park](#) and [Radha Rajkotia](#) use the organizational strategy at [Innovations for Poverty Action \(IPA\)](#) as a case study to highlight how international research organisations can transition from merely generating evidence to 'to a grounded and iterative approach of cocreation between researchers and end users of research.'



THE GOOD USE OF EVIDENCE for greater societal impact.

Photo: Stanford Social Innovation Review
(Illustration by Patrick Fennessy)

INTERNATIONAL EVIDENCE

A recent [article](#) by [Corinne Schuster-Wallace](#) and [Robert Sandford](#) makes a case for the establishment of a Canadian water agency to mitigate a 'water insecure future'. Authors cite evidence from the most recent [State of the Climate report](#) from the World Meteorological Organization to highlight the surging number of people who in 2020 were doubly hit by both climate-related disasters and pandemic disruptions.

Employers can look forward to a newly published [report](#) about improving gender equality in the workplace authored by the [Behavioural Insights](#) team. The report provides guidance to employers by using approaches that have been shown to improve outcomes for gender equality and can be used as an evidence-based toolkit to inform workplace gender equality policies and programs.

How can coaching lead to school improvement? A recently published study by Rachel Lofthouse and Trista Hollweck in the International Journal of Mentoring and Coaching in Education helps us answer this question. Spoiler alert, 'the best evidence appears to support contextual coaching specifically'. Learn more about the findings of this study in this [SchoolsWeek article](#).

Hot off the press

[Arnautu et al](#): 'Use and effectiveness of policy briefs as a knowledge transfer tool: a scoping review'

[Department of Planning, Monitoring and Evaluation \(DPME\) Research and Knowledge Management Unit](#): 'Trust in Government Evidence Synthesis and International Benchmarking Study'

[Sfetcu et al](#): 'Teams for sustainability of evidence implementation'

Opportunities

- [South African National Research Foundation \(NRF\): Call for Applications for the Sasol-NRF University Collaborative Research Grant 2022. Submit applications by 29 October 2021.](#)
- [Perivoli Africa Research Centre \(PARC\) opens applications for Partnerships Fund 2021 – Africa-based researchers at African institutions to lead Africa-centred projects in collaboration with colleagues at the University of Bristol. Due 7 January 2022.](#)